



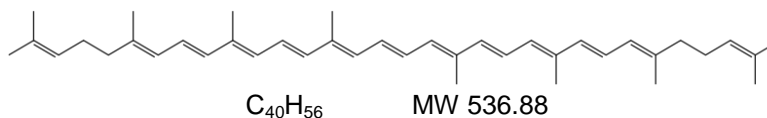
# Lycotene 10% WSC

## Lycopene 10% Powder

### Description:

**Lycotene 10% WSC** is a reddish free flowing powder containing 10% lycopene. The Lycopene crystals are encapsulated in a matrix of modified starch, sugar, dextrin and vegetable oil. dl- $\alpha$ -tocopherol and ascorbyl palmitate are added as antioxidants. The lycopene meets the requirements of the latest editions of USP, FCC, Ph.Eur.

### Chemical Structure: (Lycopene)



### Specifications:

|                                    |                            |
|------------------------------------|----------------------------|
| Appearance                         | Fine red powder            |
| Lycopene content                   | min. 10%                   |
| Particle size                      | minimum 90% through #40    |
| Dispersibility in water            | satisfactory               |
| Colour intensity, aqueous solution | A (1%, 1cm) at max: min.80 |
| Loss on Drying                     | maximum 5%                 |
| Heavy metals (as Pb)               | maximum 10 ppm             |
| Arsenic                            | maximum 3 ppm              |
| Microbiological purity             | corresponds                |

### Storage and Stability:

**Lycotene 10% WSC** is sensitive to air, humidity, light and heat. The shelf life of the product is 24 months from the date of production, when stored in the unopened original packaging at a temperature below 15°C. The effective date is stated on the label. Contents should be used immediately after opening.

### Solubility:

**Lycotene 10% WSC** is dispersible in cold water, yielding a red colour. A stock solution can be prepared by slowly adding the desired amount of powder to 10 - 15 times its weight of warm or cold water while stirring.

### Use:

As a nutrient in food and pharmaceutical products and/or as a coloring agent.

### Others:

**Lycotene 10% WSC** is free from egg & egg derivatives, milk products, animal products, fish & shellfish products, peanuts, sesame seeds, barley, rye, oats, garlic, celery, yeast products, natural flavourings, artificial flavourings, benzoates, BHA/BHT, sulfites, MSG/glutamates and tartrazine (Yellow # 5).

This information is provided based on current knowledge and experience. It does not relieve the end user or processor from testing and taking their own precautions. Any existing legislation, regulations and relevant rights must be observed by the user. October 2009